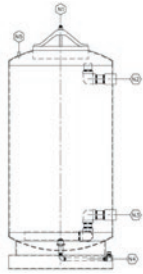


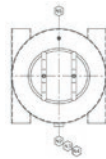
STEEL FILTRATION VESSELS

LV & MV SERIES

The Steel Filtration Vessels (LV & MV Series) are fabricated of carbon steel. They feature a NSF certified high solids epoxy lining for excellent corrosion protection. These absorbers are versatile and designed to utilize CETCO GAC or PM-100™ medias and are constructed for either long or short term installations.

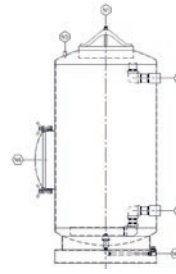


- N1 Elliptical Manway (Top)
 - N2 Process Inlet
 - N3 Process Outlet
 - N4 Drain With Ball Valve
 - N5 Vent With Pilot
- Internals are 304 SS Well Screen
W/ 0.012" Slot Size

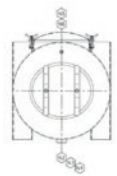


LV Series

CETCO Media
for LV Series
GAC



- N1 Circular Manway (Side)
 - N2 Process Inlet
 - N3 Process Outlet
 - N4 Drain With Ball Valve
 - N5 Vent With Pilot
 - N6 Elliptical Manway (Top)
- Internals are 304 SS Well Screen
W/ 0.012" Slot Size



MV Series

CETCO Media
for MV Series
PM 100™



TECHNICAL SPECIFICATIONS

EQUIPMENT	OPTIMAL FLOW	MAX PRESS.	MAX TEMP.	INLET/OUTLET	DIA./HGT	BED	TOP	SIDE	STANDARD FILL	SHIPPING WGT (EMPTY)
Part Number	GPM	PSIG	Deg F	Inches	Inches	Volume	Elliptical Manway	Bolted Manway	LBS	LBS
LV-500	8-25	75	130	2" / 2"	30" / 71"	20 FT ³	Yes	No	500	350
LV-1000	10-35	75	130	2" / 2"	36" / 86"	35 FT ³	Yes	No	1000	535
LV-2000	15-70	75	130	3" / 3"	48" / 102"	75 FT ³	Yes	No	2000	1020
LV-3000	25-120	75	130	3" / 3"	60" / 107"	117 FT ³	Yes	No	3000	1525
LV-5000	35-165	75	130	4" / 4"	72" / 119"	196 FT ³	Yes	No	5000	2490
MV-500	8-25	75	130	2" / 2"	30" / 71"	20 FT ³	Yes	Yes	1000	350
MV-1000	10-35	75	130	2" / 2"	36" / 86"	35 FT ³	Yes	Yes	2000	535
MV-2000	15-70	75	130	3" / 3"	48" / 102"	75 FT ³	Yes	Yes	4000	1020
MV-3000	25-120	75	130	3" / 3"	60" / 107"	117 FT ³	Yes	Yes	6000	1525
MV-5000	35-165	75	130	4" / 4"	72" / 119"	196 FT ³	Yes	Yes	10000	2490

NOTES:

- 1) Desired contact time may require lower flow rates
- 2) CETCO PM-100™ and GAC medias are available as adsorbent media
- 3) Adsorbent fill weight can differ based on media density and alternate adsorbents
- 4) Connections are FNPT

cetco@mineralstech.com | cetco.com | 800.527.9948

UPDATED: DECEMBER 2020

© 2020 CETCO. IMPORTANT: The information contained herein supersedes all previous printed versions, and is believed to be accurate and reliable. For the most up-to-date information, please visit www.cetco.com. CETCO accepts no responsibility for the results obtained through application of this product. CETCO reserves the right to update information without notice.

